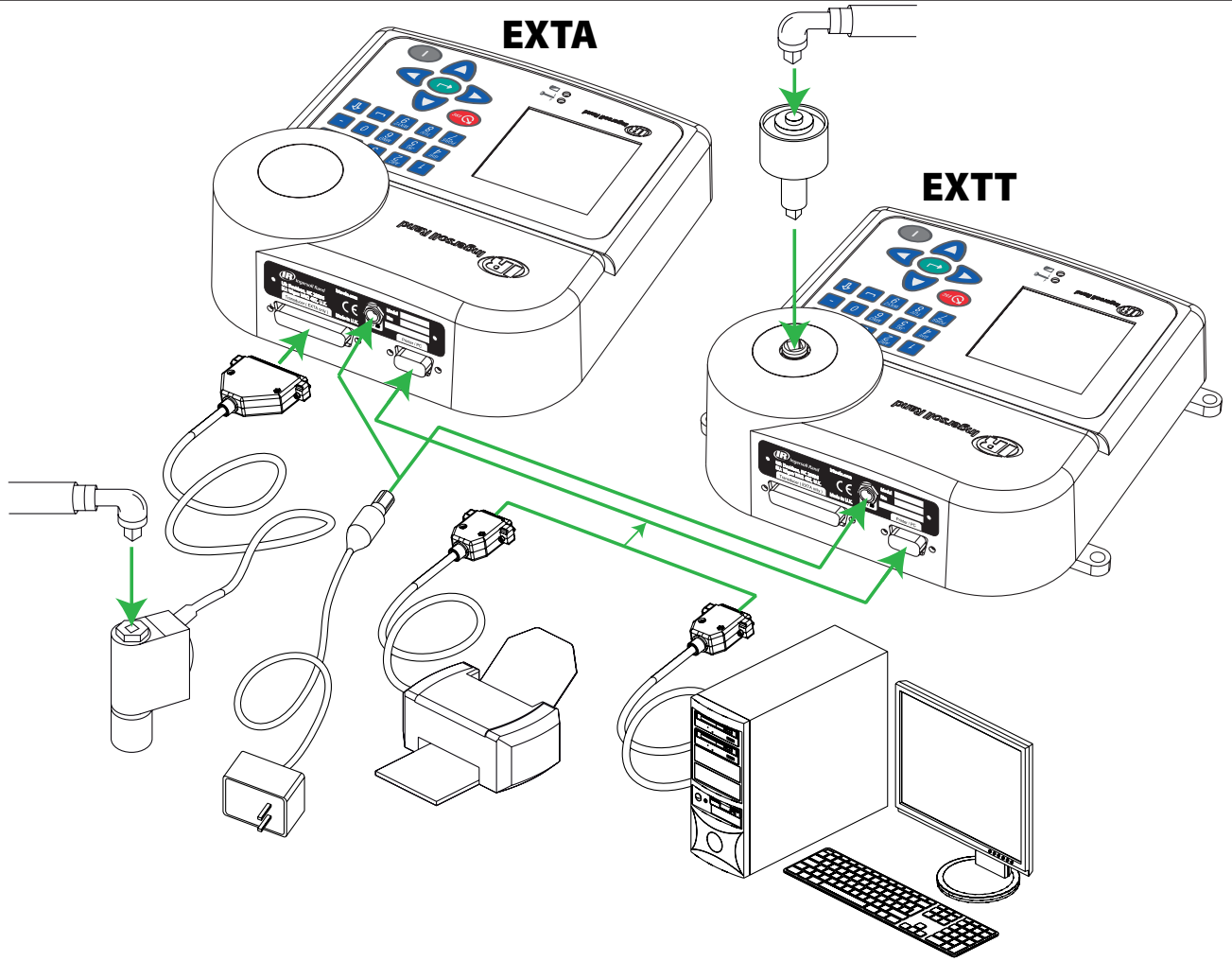
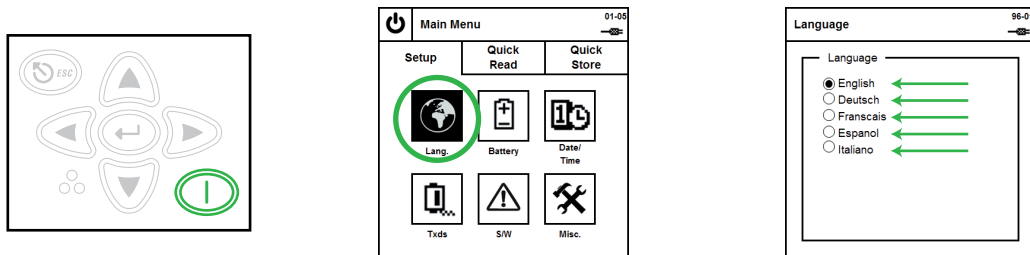


EXTA/EXTT Quick Start Guide

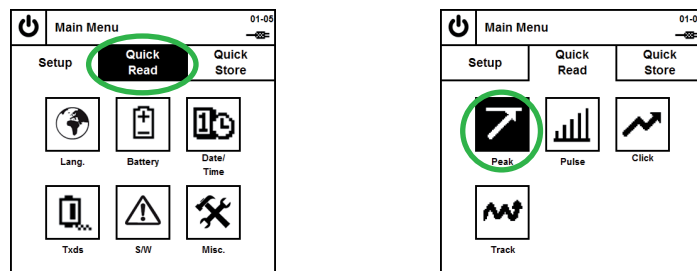
1



2



3



EXTA/EXTT Quick Start Guide

EXTT & EXTA (TSD, TRD, UTA & Smart Transducers)

4a

Quick Reading 02-02
0.00 Nm
UTA 30.00Nm 180 0.2 s
S/N = 27916 542 Hz

Quick Setup 03-02
Txd Span 30.00 Nm
Recal. Due: 09/06/2010
Displayed Units Nm
Direction Auto
Cycle End Time 0.2 s
Freq. Response 542 Hz

Quick Setup 03-02
Torque Thr. 1.50
2nd Parameter None
Torque Thr. 1.50
2nd Parameter Angle
Angle Thr. 3.00

4b

EXTA (I/S & H/O Transducers)

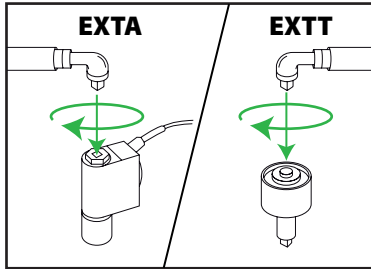
Quick Setup 03-01
Transducer I/S
Span 50.00
Torque @ 2mV/V 50.00
Transd. Units Nm
Pulses Per Rev 0
Millivolts/Volt 2.000
Bridge Res. 350

Quick Setup 03-02
Displayed Units Nm
Direction Auto
Cycle End Time 0.2 s
Freq. Response 542 Hz

Quick Setup 03-02
Torque Thr. 2.50
2nd Parameter None
Torque Thr. 1.50
2nd Parameter Angle
Angle Thr. 3.00

5

Quick Reading 02-02
0.00 0.00
0.00 lbft
UTA 30.00Nm 180 1.0 s
S/N = 27916 542 Hz



Quick Reading 02-02
33 2.04
3.59 lbft
UTA 30.00Nm 180 1.0 s
S/N = 27916 542 Hz

6

Quick Reading 02-02
33 2.04
3.59 lbft
UTA 30.00Nm 180 1.0 s
S/N = 27916 542 Hz

Main Menu 01-01
Setup Quick Read Quick Store
Peak Pulse Click
Track

